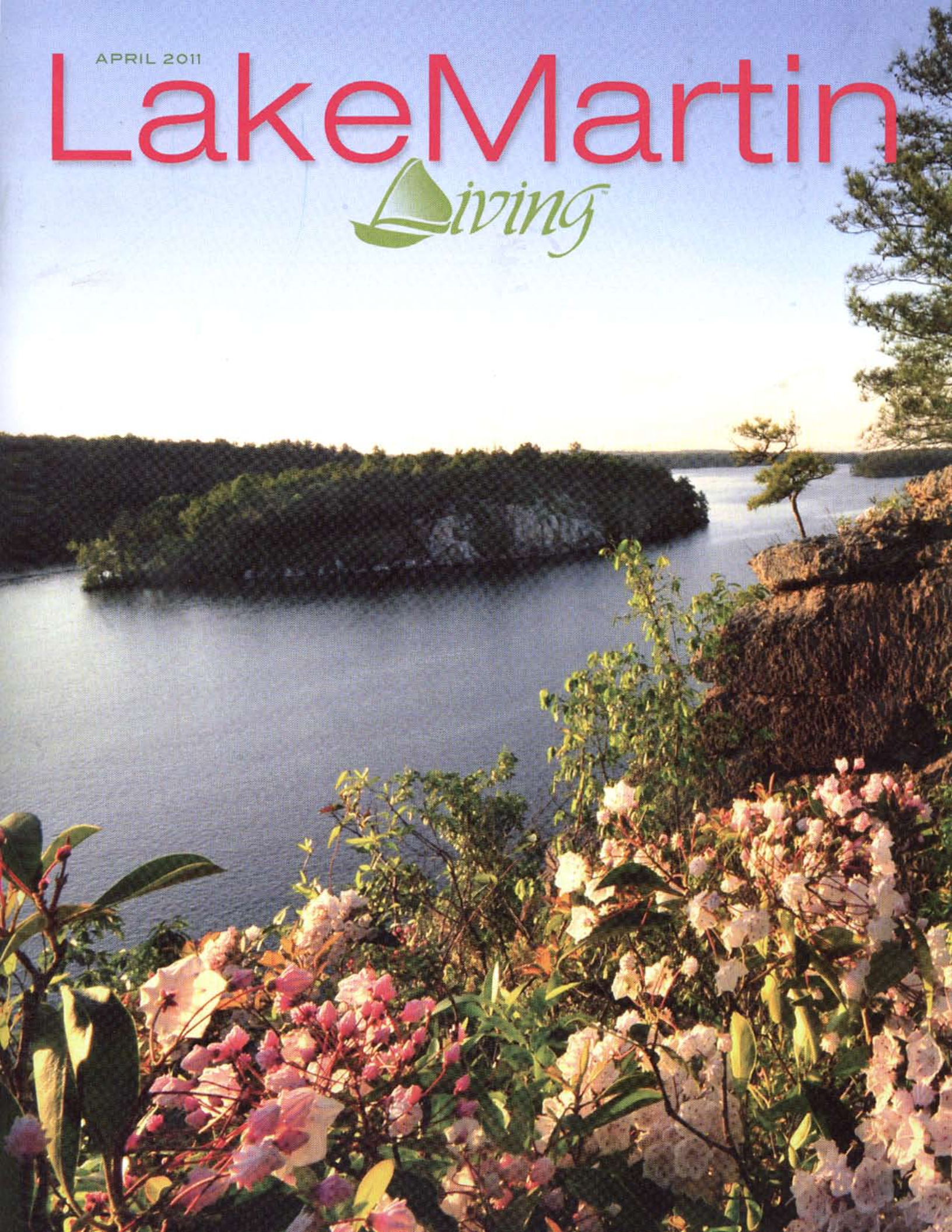


APRIL 2011

# Lake Martin

*Living*







# THE RIDGE RUN

## A New Lake Martin Neighborhood with Architectural Style

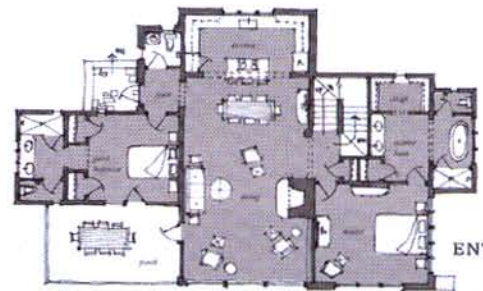
by KRISTY STEELE

A little over two years ago, the Discovery Center at Russell Crossroads was completed. Since then, Russell Lands completed and opened SpringHouse restaurant and Catherine's Market. Russell Crossroads has received a myriad of marvelous comments about the

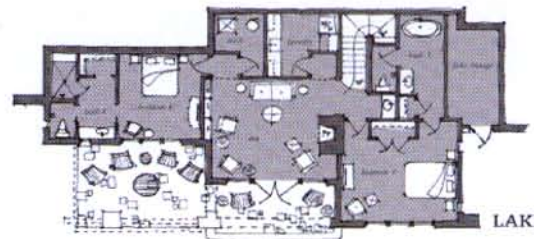
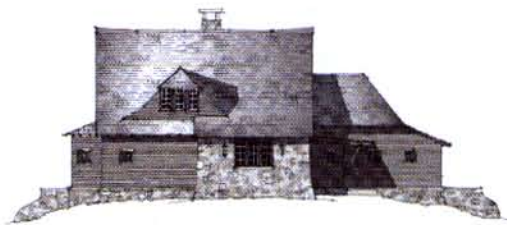
stone, the trim, the heavy timbers and even the light fixtures. In fact, these buildings are among the most talked about structures within several hundred miles of the lake. Russell Lands humbly accepts these gratifying comments especially since the investment was



UPPER LEVEL



ENTRY LEVEL

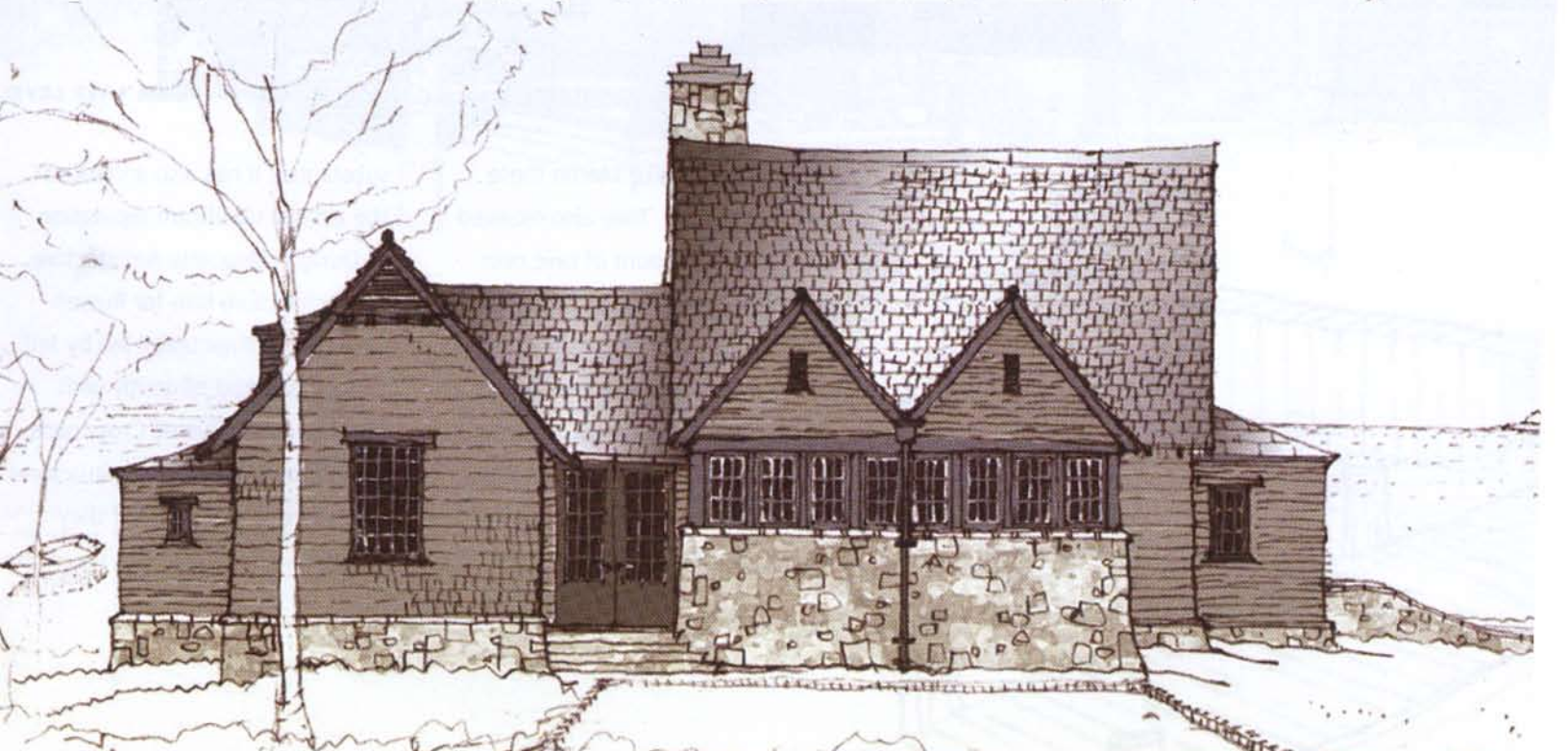
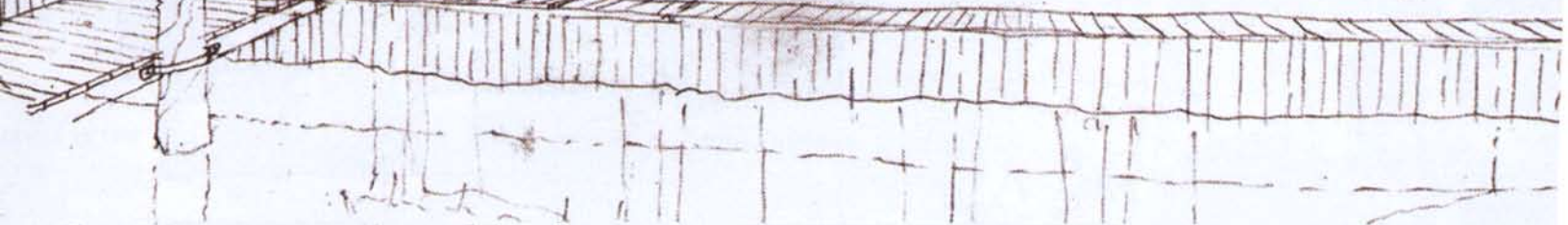
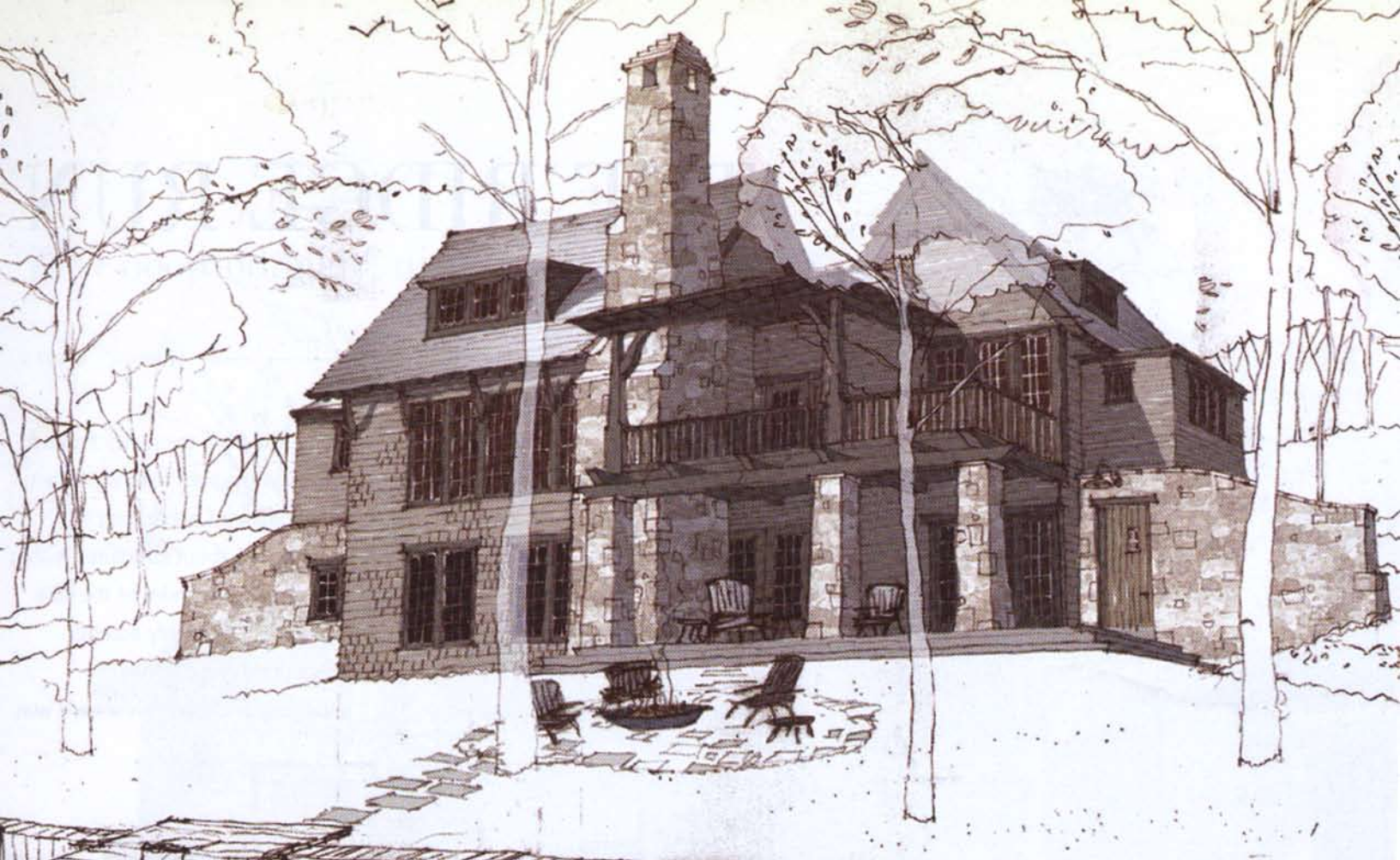


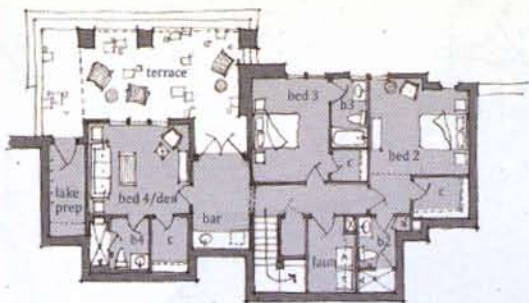
LAKE LEVEL

contribution to Lake Martin these businesses bring. They also received an enormous amount of rave over the architectural style at Crossroads.

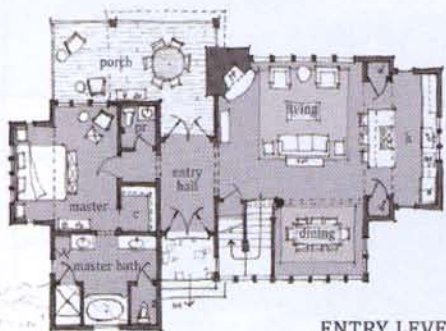
For instance, they have had people ask for the paint color for a building because they wanted to paint their lake home that color. They have had people ask where they found the

substantial. It has also enhanced the already significant reputation of Dungan Nequette Architecture, the architecture firm for Russell Crossroads. Their team, led by Jeff Dungan, worked diligently with them to create Russell Crossroads. Russell Lands wanted the structures at Crossroads to look as if they could have been standing when the





LAKE LEVEL



ENTRY LEVEL

lake was filled. They caught the vision and delivered beautifully designed and popular structures.

This led to an interesting opportunity. In 2007, Russell Lands created a quiet enclave of lots in The Ridge On Lake Martin called Ridge Run. From the beginning, they wanted this neighborhood to have its own distinctive and consistently excellent architectural theme. It was about this same time that they were finalizing their designs for Russell Crossroads. Once the buildings neared completion, it was obvious. "Let's take the same farm village design concept to Ridge Run."

Jeff Dungan and Louis Nequette spent countless hours at the lake with Russell Lands' team to consider designs that would create the perfect lake home, and would be consistent with the popular designs of Russell Crossroads. While the designs "on paper" looked fabulous, a construction team was needed to bring them to life. For years, Russell Lands has been building waterfront homes under the well-known banner of



## MATHEWS CONSTRUCTION

BUILDING A TRADITION OF EXCELLENCE

↔ New Homes, Additions and Remodels ↔

Building new homes the old way with quality craftsmanship, attention to detail, and unparalleled customer satisfaction.

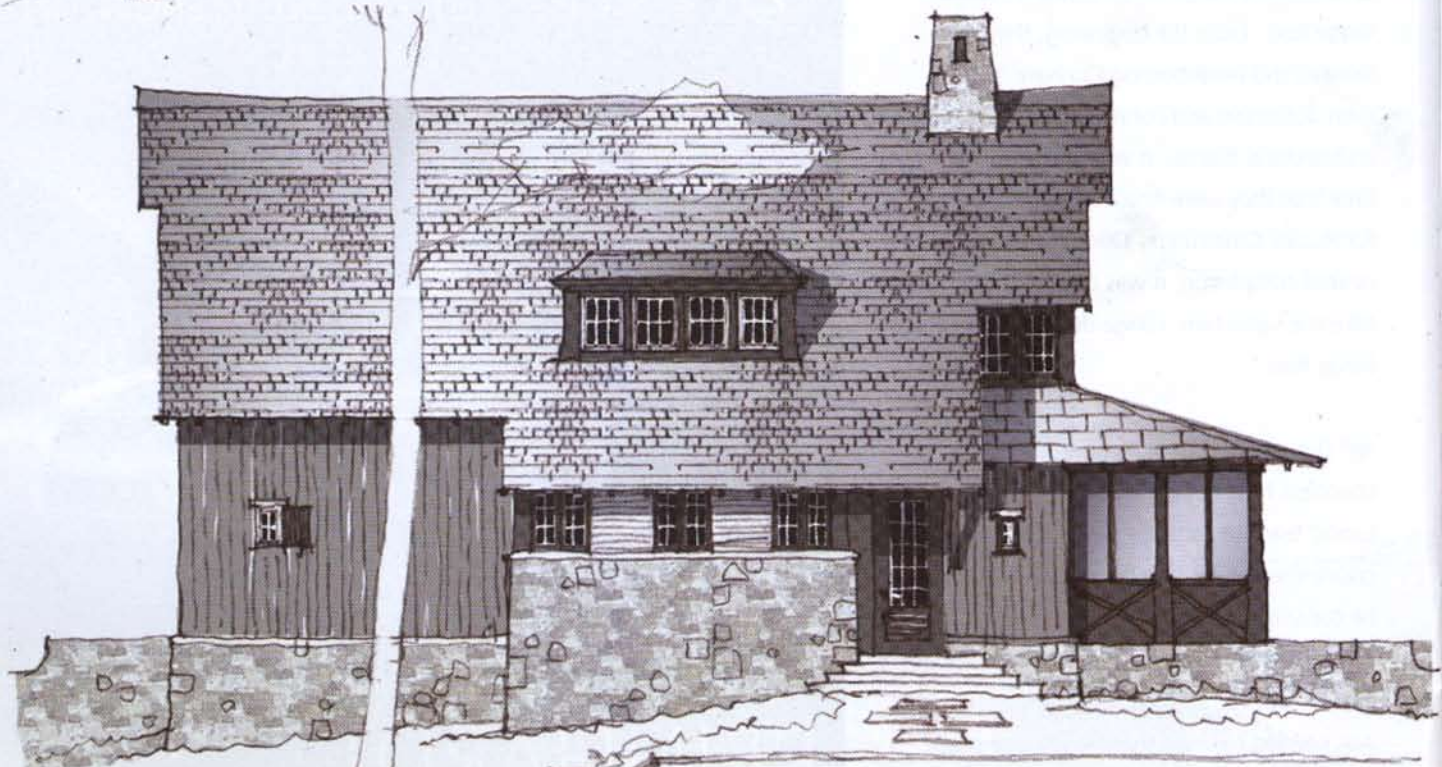
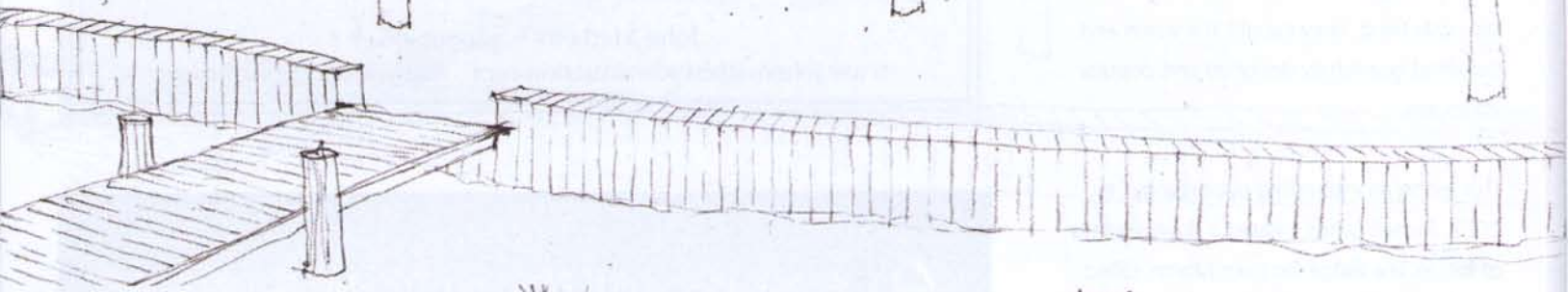
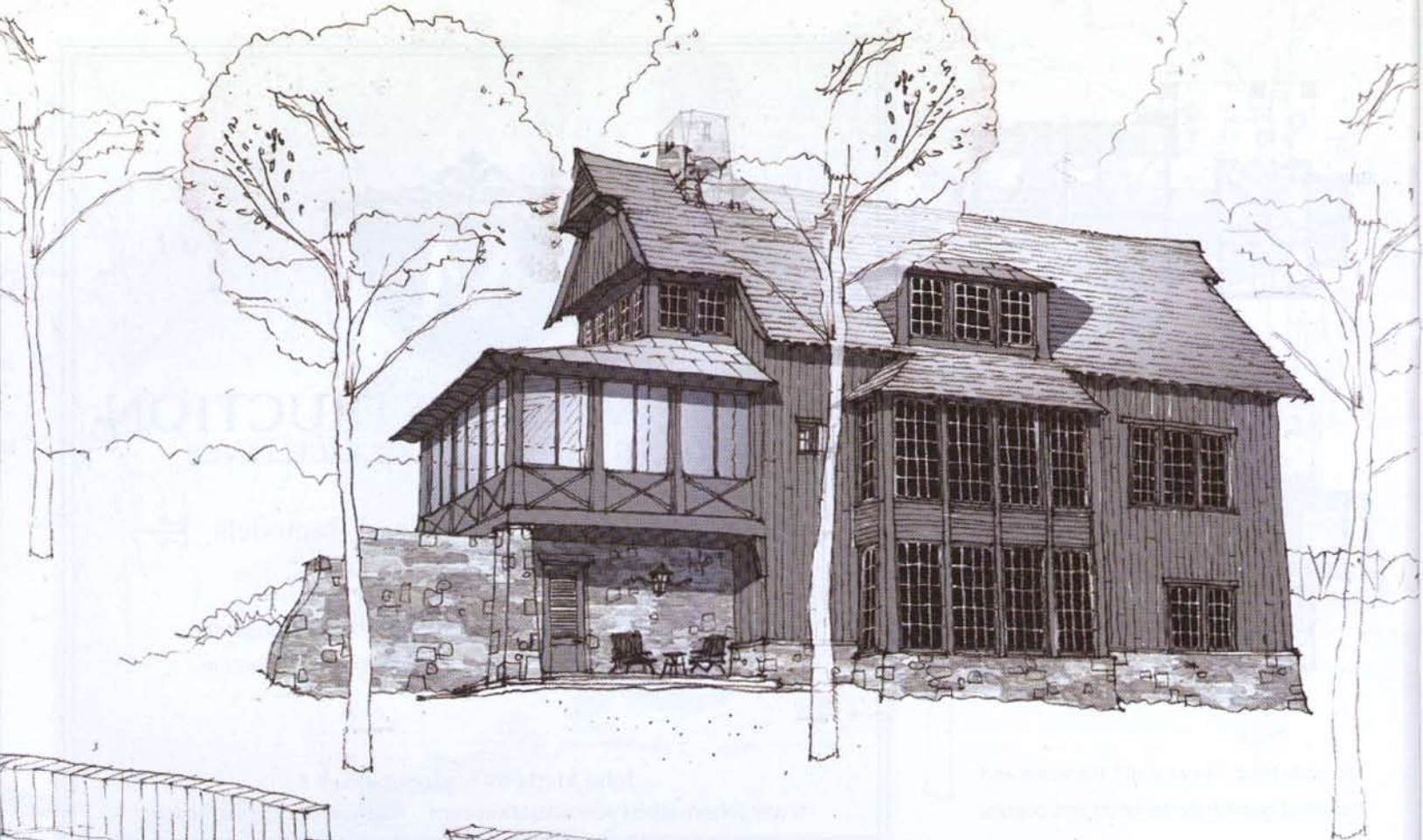
John Mathews 334-799-0047

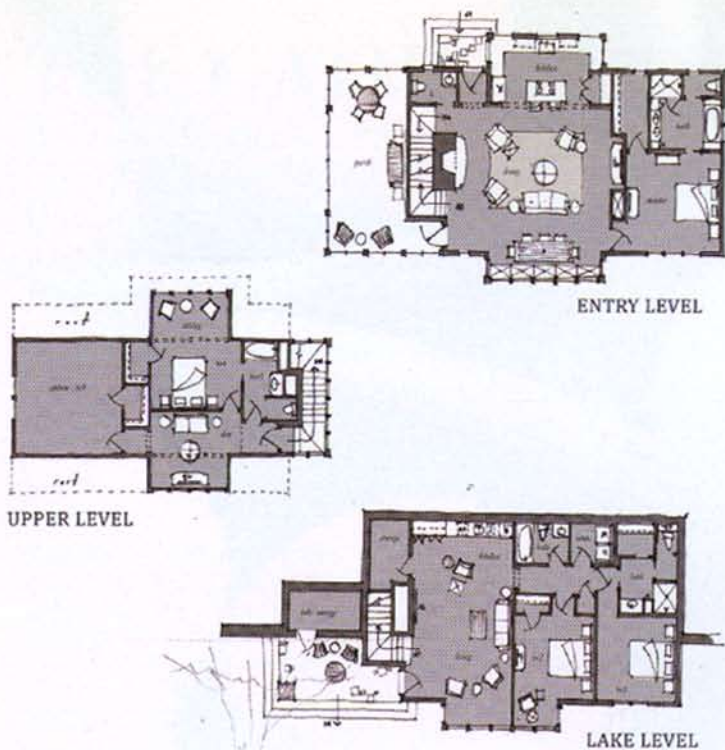
[www.johnmathewsconstruction.com](http://www.johnmathewsconstruction.com) [mathewsinc@gmail.com](mailto:mathewsinc@gmail.com)

LEXUS | IS IT POSSIBLE TO ENGINEER DESIRE?

2011 Lexus CT 200h  
Starting at \$29,995

**REINHARDT** 334.270.0605 • [REINHARDTLEXUS.COM](http://REINHARDTLEXUS.COM)  
700 EASTERN BLVD • MONTGOMERY, AL  
A FAMILY OWNED AND OPERATED BUSINESS FOR OVER 65 YEARS





Classic Homes. This team, led by Chad Calhoun and Gaius Dean, was given the job of building these exciting "old but new" designs.

So out of the ground comes two new waterfront homes in The Ridge Run neighborhood. Arguably, there is not a product like this on any lake in the world, much less in the American Southeast.

Ridge Run has only 16 waterfront lots from which to choose. Their design library allows the right blend of customization, and fixed designs, to suit the discriminating lake lover while creating a very simple and enjoyable building process for the client.

The pricing and selections are just as appealing as the homes. With the varied size of the homes and lot selection, they can offer attractive waterfront homes in the low \$800,000s to slightly above \$1,200,000, depending on final features and lot selection. In most cases, the pricing will be below \$1,000,000.

The first of these homes will be completed in late June or early July, but you can see them taking shape daily. Call 256.215.7011, or visit the Discovery Center to get a personal tour today.

*Lake Martin Living is excited about following this project closely. We invite you to follow along with us. Look for updates and project photos in the next few LML issues.*

BUILD SOMETHING BRIGHT

ICYNENE

With smart, responsible spray foam insulation choices, Icynene® allows you to live in a Healthier, Quieter, More Energy Efficient® home.

**ECO LOGICAL INSULATION**  
SPRAY FOAM CONTRACTORS  
MURFreesboro, TN

Call us today 334-246-1777 or visit [EcoLogicalInsulation.com](http://EcoLogicalInsulation.com)

**A GATHERING PLACE FOR FAMILIES & FRIENDS**

LUNCH ▶ TUESDAY - FRIDAY  
DINNER ▶ TUESDAY - SATURDAY

SUNDAY LUNCH

APPETIZERS • SALADS  
SANDWICHES • STEAKS • SEAFOOD

DOWNTOWN ALEX CITY • BROAD STREET  
256.234.4300

**Jake's**